



startronix
THE BEST STAR MARK TO YOUR SYSTEM

CRAFTING CONNECTIVITY: INNOVATING SHEET METAL SOLUTIONS

INTRODUCTION

"Welcome to STARTRONIX MODULAR SYSTEM, where precision meets durability in the sheet metal industry. From customised server racks to heavy-duty shelves, we engineer solutions that redefine strength and reliability."



WHO ARE WE

- * Sheet metal fabricator, established in 1999 in Bengaluru.
- * Having 120,000 Sq feet area for manufacturing & assembly of products.
- * An ISO 9001:2015 & 14001:2015 certified company.
- * An ISO 45001:2018 certified company - RoHS complied process.
- * State-of-the-art manufacturing infrastructure.
- * Technically qualified professionals who can manage critical requirements.
- * Well-defined solutions that reach out to your business.

OUR MACHINING CAPABILITIES



SHEET METAL BENDING

LASER CUTTING



WIRE HARNESS STATION



POWER PRESS



INJECTION MOULDING

OUR MAJOR PRODUCTS

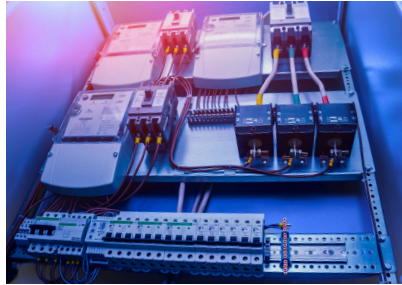
NETWORK SERVER RACKS

"A network rack is a specialized enclosure designed to organize and house networking equipment, such as servers, switches, and routers, in a structured and space-efficient manner."



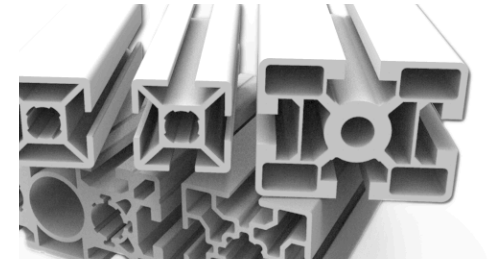
CONTROL PANELS

"Electrical control panels manage and regulate electrical circuits and systems, facilitating the operation and monitoring of machinery and equipment."



ALUMINIUM STRUCTURE

"Aluminum structure manufacturing: Crafting lightweight, durable solutions for diverse industrial and architectural needs."



HEAVY DUTY METAL SHELVES

"Heavy-duty metal shelves: Built to withstand heavy loads and provide durable storage solutions for industrial and commercial applications."



OUR CERTIFICATIONS

ISO 9001 & 14001



OUR PRODUCTS CERTIFIED WITH



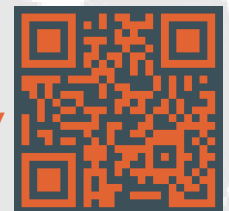
"Any Questions? Reach out to our team—we're here to help you."

☎ +91 9606943073

✉ info@startronixindia.com

▶ www.youtube.com/@StartronixModularSystemsPvtLtd

"Unlock Limitless Possibilities! Scan our QR code now for an exclusive journey through our website!"



startronix
THE BEST STAR MARK TO YOUR SYSTEM